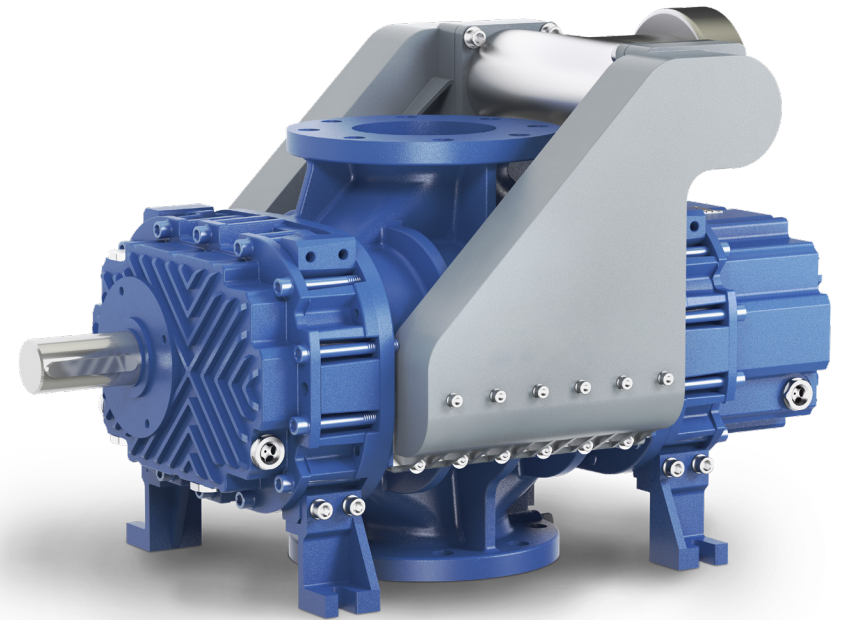




# FRUITLAND

## RB-DV 65 SERIES

RB-DV series of rotary three lobe PD blowers can operate at high vacuum levels due to a patented device that injects atmospheric air. This allows the blower to operate at maximum vacuum without overheating.

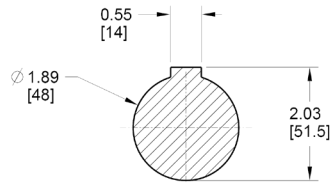


### FEATURES

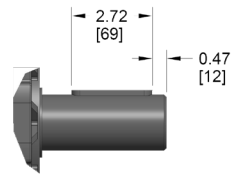
- Vacuum rate up to 93% (blank off) - 28" Hg & 90% -27" Hg continuous
- Gases and vapours can be handled
- Lack of sliding parts, reduces wear
- Safe operation environmentally friendly
- No oil mist

### SPECIFICATIONS

- Approximate Free Air Flow - 912 CFM
- Maximum Vacuum - 28" Hg
- Power Required @ 27" Hg - 49 HP
- Power Required @ 28" Hg - 61 HP
- Power Required @ 10 PSIG - 38 HP
- Power Required @ 15 PSIG - 52 HP
- Max Pressure - 15 PSIG
- Size of Hoses - 4"
- Max Input Speed - 4800 RPM
- Approximate Net Pump Weight - 353 Lbs

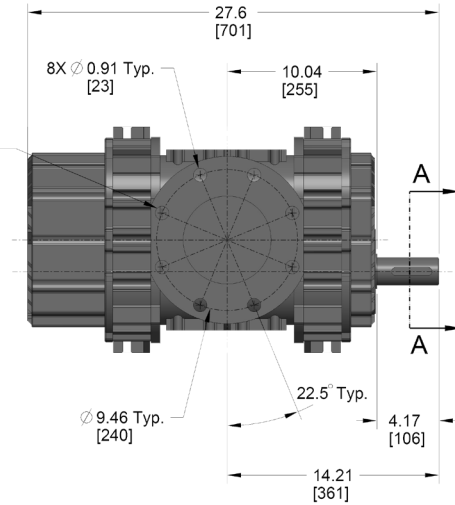


SECTION A-A  
SCALE 0.750

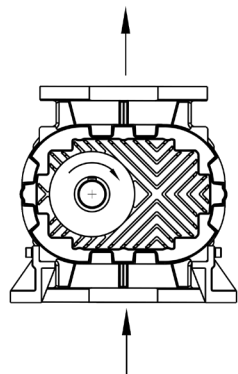
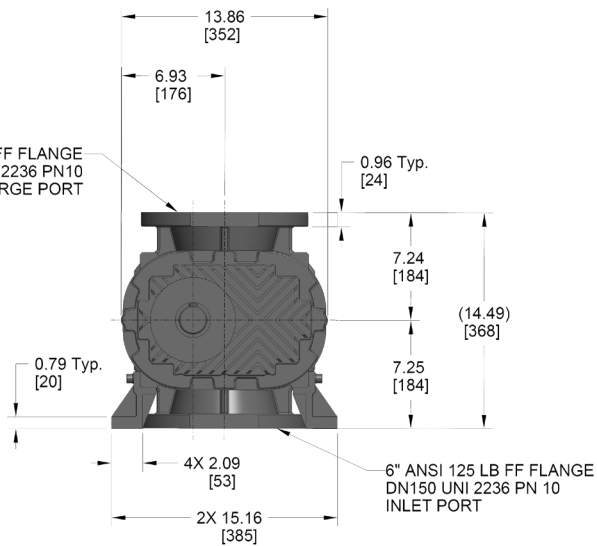


DETAIL A  
SCALE 0.400

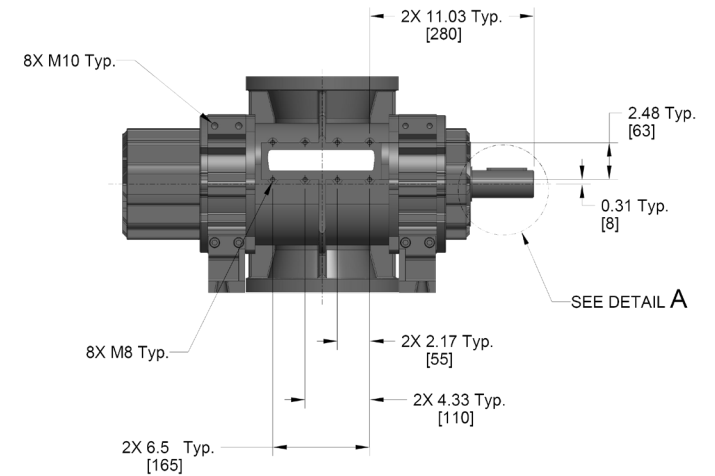
8X HOLES EQUALLY SPACED (45°)



6" ANSI 125 LB FF FLANGE  
DN150 UNI 2236 PN10  
DISCHARGE PORT



CW ROTATION (SHOWN)  
TOP DISCHARGE



SEE DETAIL A

