



RT Series Datasheet

November 2025 V0

The RT Series peristaltic metering pump from Albin Pump is an advanced chemical metering pump for use in water and general industrial applications for delivering controlled and accurate dosing of chemicals.



The RT Series includes as standard all advanced controls for SCADA and digital integration and these key features:

- Patented offset rotor technology for simple and safe tube changes
- IP66 quick-release USB-C Port for simple upload of pump firmware versions and downloading or timed collection of pump operating data
- Universal power supply rated from 100-240V at 50/60Hz and up to 6 power cord options for global use
- FluxDrive™ motor technology for maximum control and turndown and a linear torque curve which delivers full torque even at lowest speed and maximum duty point
- An all new design sealed pump head with integrated optical leak detection sensor
- Sealed and serviceable pump head which does not require replacement of the entire pump cartridge, minimizing both the environmental impact and operation costs
- Integrated cover safety sensor ensuring operator safety when performing routine maintenance
- IP66 / NEMA 4X rated enclosure for continuous indoor and outdoor use with all chemically resistant materials and UV protection for continued, long term durability and performance
- Integrated removable base with universal bolting pattern for easy retrofit, simplified installation, and toolless removal of unit for servicing



RT Series Overview

Pump Model	Control Code*	Flow (GPH/LPH)	Pressure (PSI/Bar)	Materials
RT2	RT2X1 - Advanced	5.28 / 20	100 / 6.9	PVDF Connections with 3 available tube materials: XL - Extended Life CR - Chemical Resistant PT - Petro Tough
RT3	RT3X1 - Advanced	15.85 / 60	100 / 6.9	
RT4	RT4X1 - Advanced	31.7 / 120	60 / 4.1	

Advanced controls includes complete Inputs/Outputs for SCADA integration + MODBUS RTU

- 4 Dry Contact Digital Inputs
- 2 Open Collector Digital Outputs
- 2 Form-C Relay Outputs
- 2 Analog 4-20mA Inputs
- 2 Analog 4-20mA Outputs
- Frequency PWM Input
- 0-10VDC Input
- RS485 Connection for Modbus RTU
- USB-C Drive Interface

All advanced pumps available with control module for Profibus, MODBUS TCP, and Ethernet IP

General Specification RT Series metering Pump

Ingress protection	IP66 / NEMA 4X
Voltage / Frequency	100/240 VAC, 50/60 Hz
Amperage	0.8A @ 120V, 0.4A @ 240V
Operation environment	Indoor / Outdoor
Process fluid temperature	-10°C to +45°C (14F to 113F)
Operating ambient temperature	-10°C to +50°C (14F to 122F)
Storage temperature	-40°C to +70°C (-40F to 158F)
Operating humidity range:	0-95% RH (non-condensing)
Repeatability / Accuracy	± 0.5% / ± 1.0%
Max Suction Lift	30 ft / 9.1m
Connections	½" NPT/BSP Suction and Discharge



RT Series Model Code

Model RT Series				
RT2	RT2 Drive Assembly 5.3 gph 100 psi (20 lph 6.9 bar)			
RT3	RT3 Drive Assembly 15.9 gph 100 psi (60 lph 6.9 bar)			
RT4	RT4 Drive Assembly 32 gph 60 psi (120 lph 4.1 bar)			
Power Cord Plug				
1	110V USA			
2	220V USA			
3	220V DIN			
5	220V UK			
6	220V Australia / New Zealand			
7	220V Swiss			
Control Code				
1	Advanced SCADA with MODBUS RTU			
Tube Selection*				
2XL	XL Tube	RT2		
2CR	CR Tube			
2PT	PT Tube			
2XL	XL Tube	RT3		
2CR	CR Tube			
2PT	PT Tube			
2XL	XL Tube	RT4		
2CR	CR Tube			
2PT	PT Tube			
Pump Head Orientation				
L	Port Left			
R	Port Right			

RT2 1 1 - 2XL L Sample Model Number

* All tube assemblies include PVDF suction and discharge connection of 1/2" NPT/BSP

All pumps include in the box:

- Connection kit with 1/2" nuts and 3/8" furrules
- Interconnecting tubing
- One 49035 6-Pin Connection



Spare Parts & Accessories

RT Optional Accessories	
49035	J1-J3 M12 6 Pin Connection Cable 6ft
RSP90004	J4 M12 6 Pin Connection Cable - Outputs - 6ft
TNP20115	Ethernet Data Cable
RSA90016	Communications Box - MODBUS TCP
RSA90015	Communications Box - Profibus
RSA90015	Communications Box - Ethernet IP
	Quick Disconnect Fittings
	Barbed Connection Fittings

RT Spare Parts	
RS-R-X	RT Universal Rotor Assembly
RSP90022	RT Replacement Cover Assembly
RSP90004	RT Replacement Baseplate
RT2-2XL	Tube Assembly RT2 XL
RT2-2CR	Tube Assembly RT2 CR
RT23-2PT	Tube Assembly RT2 and RT3 PT
RT3-2XL	Tube Assembly RT3 XL
RT3-2CR	Tube Assembly RT3 CR
RT4-2XL	Tube Assembly RT4 XL
RT4-2CR	Tube Assembly RT4 CR
RT4-2PT	Tube Assembly RT4 PT

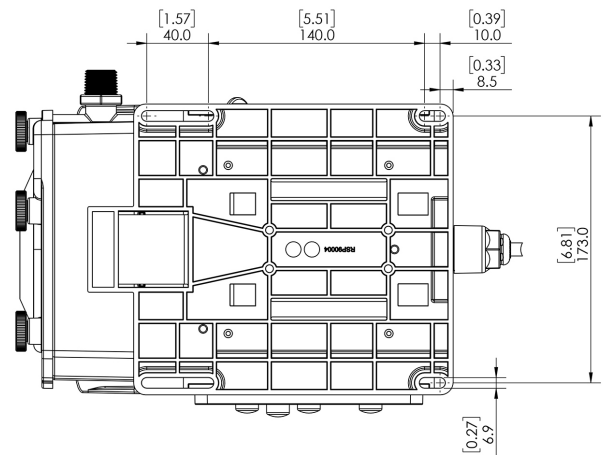
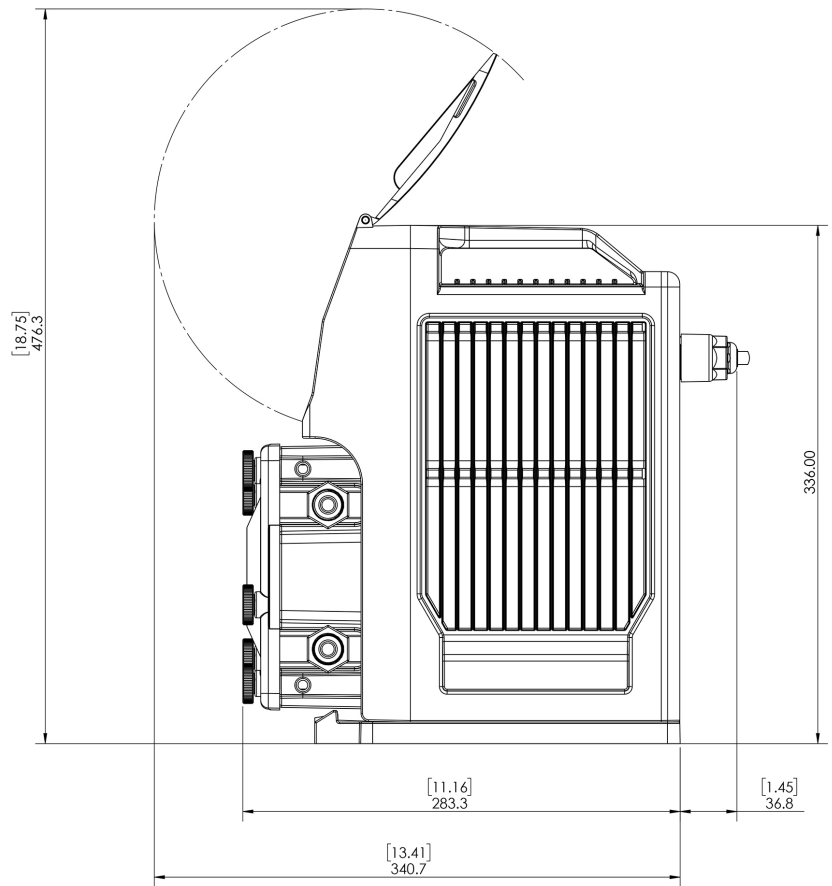
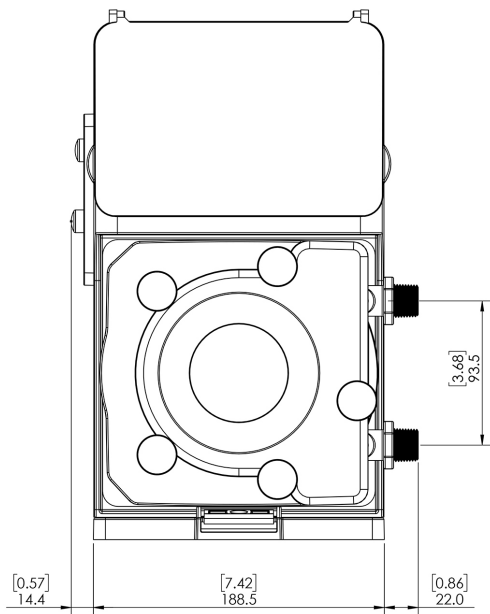
Albin XL - Extended Life tubing has excellent acid and alkali resistance, and is compatible with numerous oxidizing agents such as sodium hypochlorite. Albin XL is best for fatigue life and is the longest-lasting tube in compatible applications. Min/max temperature: 0-80°C (32-176°F).

Albin CR - Chemical Resistant is suited for handling strong acids and bases, and is virtually unaffected by most commercial sanitizers & cleaners. Min/max temperature: 0-54°C (32-130°F).

Albin PT - Petro-Tough can be used with fats and oils, lubricants, and some solvents. Min/max temperature: 0-54°C (32-130°F).



Dimensional Drawing



CERTIFICATIONS:



About Ingersoll Rand Inc.

Ingersoll Rand Inc. (NYSE:IR), driven by an entrepreneurial spirit and ownership mindset, is dedicated to helping make life better for our employees, customers and communities. Customers lean on us for our technology-driven excellence in mission-critical flow creation and industrial solutions across 40+ respected brands where our products and services excel in the most complex and harsh conditions. Our employees develop customers for life through their daily commitment to expertise, productivity and efficiency. For more information, visit www.IRCO.com.

