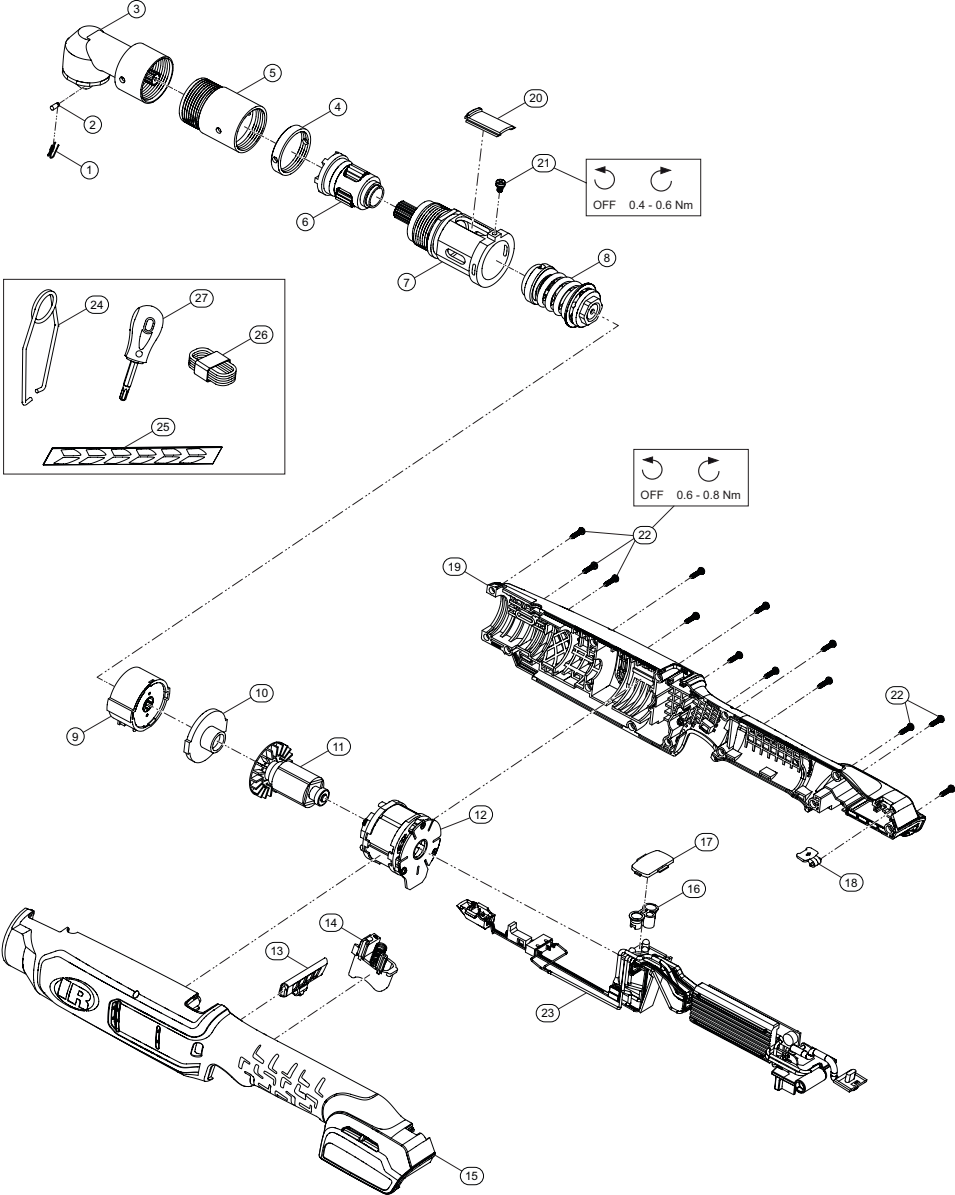


QC Clutch Angle Tool Series, Cordless Screwdriver - Exploded View



(Dwg. TL-QC2A-PLM-1)

QC Clutch Angle Tool Series, Cordless Screwdriver - Parts List

| Item | Part Description | Part Number (CCN) | Item | Part Description | Part Number (CCN) |
|------|---------------------------------|-------------------|------|---------------------------------|----------------------|
| * | Angle Head Kit | TK-QC2A-550 | 23 | PCBA Kit | --- |
| 1 | Socket, Retaining Spring | --- | * | PCBA Assembly for QCP2A30S6 | TK-QC2A-499-P30 |
| 2 | Socket, Retaining Pin | --- | | PCBA Assembly for QCN2A30S6 | TK-QC2A-499-N30 |
| 3 | Angle Head Assembly | --- | * | Suspension Bail Kit | VP1-365 |
| * | Front Gear Case Kit | TK-QC2A-064 | 24 | Suspension Bail | --- |
| 4 | Clamp Nut | --- | * | Tool Label Kit | TK-QC2-300 |
| 5 | Front Gear Case | --- | 25 | Tool Foot Label | --- |
| 6 | Planetary Gear Assembly | --- | * | USB Kit | TK-QC2-USB |
| 7 | Clutch Housing Assembly | --- | 26 | USB Cable | --- |
| 8 | Clutch Mechanism Kit | TK-QC2A-581 | * | Clutch Screwdriver Kit | TK-QC2P-306 |
| * | Gearbox Assembly Kit | TK-QC2A-750 | 27 | Clutch Screwdriver | --- |
| 9 | Gearbox Assembly | --- | * | Fastener Kit | TK-QC2A-105 |
| 10 | Front Plate | --- | 21 | Clutch Cover Screw (1 required) | --- |
| * | Motor Assembly | TK-QC2A-054 | 22 | Housing Screw (13 required) | --- |
| 11 | Motor Rotor | --- | * | 20V Li-ion Battery Pack | --- |
| 12 | Motor Stator | --- | | 2.5Ah | BL2012 (47515903001) |
| * | Switch Kit | TK-QC2A-250 | | 5.0Ah | BL2022 (47515902001) |
| 13 | Directional Switch | --- | * | Battery Charger | --- |
| 14 | Trigger | --- | | Battery Charger, Single Bay | BC1121 (47507879001) |
| * | Housing Kit | TK-QC2A-040 | | Battery Charger, Dual Bay | BC1221 |
| 15 | Left Housing | --- | | | |
| 16 | LED Pipe | --- | | | |
| 17 | LED Backcap | --- | | | |
| 18 | USB Cover | --- | | | |
| 19 | Right Housing | --- | | | |
| 20 | Clutch Cover | --- | | | |
| 21 | Clutch Cover Screw (1 required) | --- | | | |
| 22 | Housing Screw (13 required) | --- | | | |

* Indicates not illustrated.

Parts and Maintenance

When tool life has expired, it is recommended that the tool be disassembled, degreased and parts separated by material for proper recycling. Tool repair and maintenance should only be carried out by an Authorized Service Center. Refer all communications to the nearest **Ingersoll Rand** office or distributor.

Related Documentation

Manuals can be downloaded from **ingersollrand.com**
For additional information, refer to:
Product Safety Information Manual 47114541
Product Information Manual TL-QC2-PIM
Parts Information Manual of QC Clutch Pistol Tool Series TL-QC2P-PLM
CE-Declaration of Conformity TL-QC2-DOC
UK-Declaration of Conformity TL-QC2-DOC-UK

