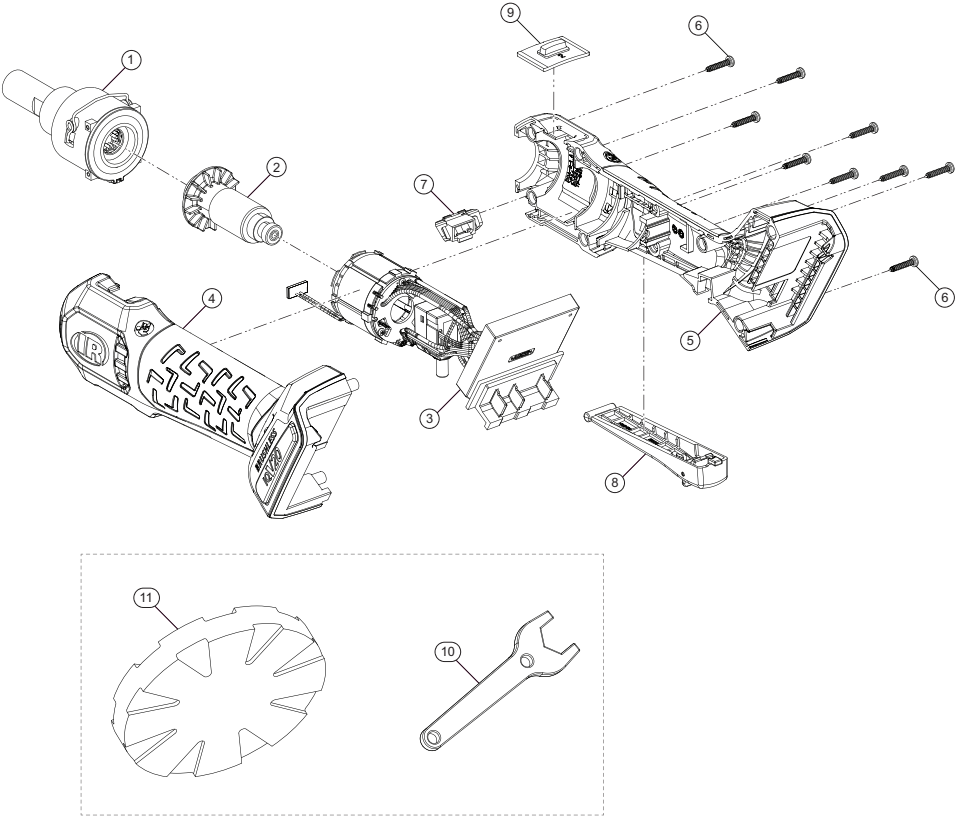


G3241, Cordless Adhesive Remover - Exploded View



(Dwg. TL-G3241-PLM-1)

G3241, Cordless Adhesive Remover - Parts List

Item	Part Description	Part Number (CCN)
*	Gearbox Kit	TK-G3241-216
1	Gearbox Assembly	TP-G3241-216
*	Motor Rotor Kit	TK-G4911-013
2	Motor Rotor Assembly	TP-G4911-013
*	Electronics Assembly Kit	TK-G3241-052
3	Electronics Assembly	TP-G3241-052
*	Housing Kit	TK-G4911-040
4	Left Housing	TP-G4911-040L
5	Right Housing	TP-G4911-040R
6	Screw (9 required)	TP-G4911-078
*	LED Lens Kit	TK-G4911-144
7	LED Lens	TP-G4911-144
*	Trigger Kit	TK-G3241-093
8	Switch Trigger Assembly	TP-G4911-410
9	Speed Selector	TP-G3241-093
*	Fastener Kit	TK-G4911-078
6	Screw (9 required)	TP-G4911-078
*	Wrench Kit	TK-G3241-026
10	Wrench	TP-G3241-026
11	Eraser Wheel Pad	324-700-1 (47515724001)
	Eraser Wheel Pad (6 required)	324-700-6 (47515702001)
*	20V Li-ion Battery Pack	
	2.5 Ah	BL2012 (47515903001)
	5.0 Ah	BL2022 (47515902001)
*	Battery Charger, Single Bay	BC1121 (47507879001)
*	Protective Battery Boot	
	For 2.5 Ah and 2.8 Ah Batteries	BL2005-BOOT (47510965001)
	For 5.0 Ah and 5.6 Ah Batteries	BL2010-BOOT (47510964001)
*	Storage/Carrying Bag	TB4 (47543666001)

* Indicates not illustrated.

Parts and Maintenance

When tool life has expired, it is recommended that the tool be disassembled, degreased and parts separated by material for proper recycling. Tool repair and maintenance should only be carried out by an Authorized Service Center. Refer all communications to the nearest **Ingersoll Rand** office or distributor.

Related Documentation

Manuals can be downloaded from ingersollrand.com
For additional information, refer to:
Product Safety Information Manual TL-G3241-SIM
Product Information Manual TL-G3241-PIM
CE-Declaration of Conformity TL-G3241-DOC
UK-Declaration of Conformity TL-G3241-DOC-UK

