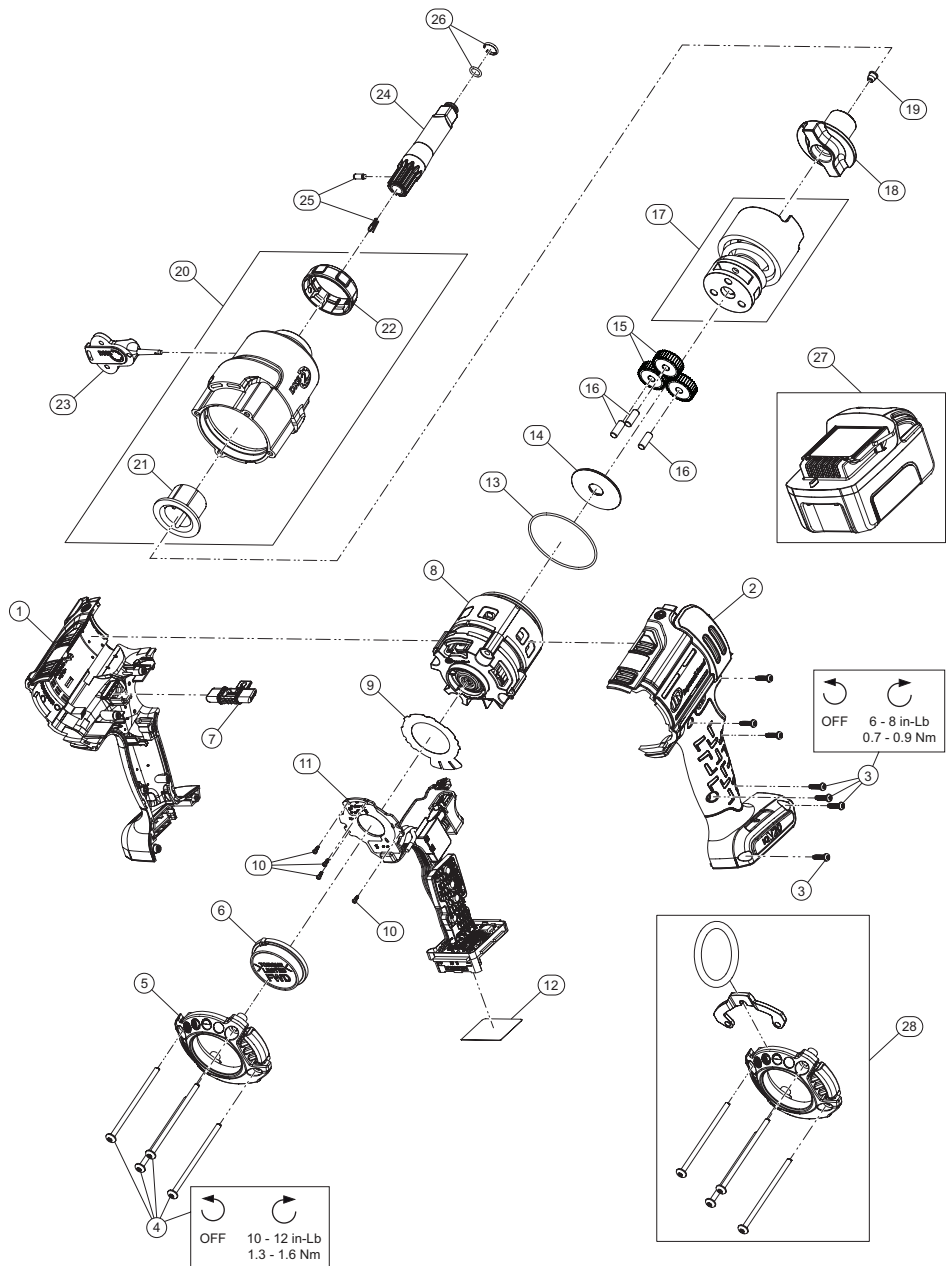


W7253-TL DXS Series, Cordless Impact Wrench - Exploded View



(Dwg. TL-W7253-TL-PLM-1)

W7253-TL DXS Series, Cordless Impact Wrench - Parts List

Item	Part Description	Part Number (CCN)	Item	Part Description	Part Number (CCN)
*	Housing Kit	W7152-K40 (47631612001)	23	Tool, Attachment Release - 10 Pack	TK-DXS-TOOL-10
1	Housing, Left	---	24	Anvil Assembly (replaceable)	EA42H
2	Housing, Right	---	25	Anvil Retainer Kit (all Splined Anvils)	TK-2236-716
3	Screw, Housing (7 required)	---	26	Socket Retainer Kit (1/2" Ring-type)	2125QTI-K425
*	Fastener Kit	W7152-K105 (47631614001)	27	Battery, BL2022	BL2022 (47515902001)
3	Screw, Housing (7 required)	---	28	Hanger Kit	W7152-K365B (47632290001)
4	Screw, Hammer Case (4 required)	---		Backcap	---
10	Screw, Hall PCBA (4 required)	---		Screw, Hammer Case (2 required)	---
5	Backcap Kit	W7152-K40B (47631613001)	*	Screw, Long Hammer Case [upper] (2 required)	---
6	Torque Limited Regulator Kit	TA-W7252-TL-249		Hanger Bracket	---
7	Directional Switch Kit	W7152-K75 (47631610001)		Hanger Ring	---
8	Brushless Motor Kit	W7152-K54 (47631607001)	*	Battery Charger	BC1121 (47507879001)
9	Insulator Sheet Kit	W7152-K624 (47633589001)	*	Protective Tool Boot - Open Regulator Control	W7152-BOOT (47621732001)
10	Screw, Hall PCBA (4 required)	---	*	Protective Tool Boot - Covered Regulator Control	W7152-BOOTX (47621734001)
*	Drive Kit	W7152-K93 (47631611001)	*	Protective Battery Boot	BL2010-BOOT (47510964001)
11	Drive Assembly	---	26	Socket Retainer Kit (1/2" Ring-type) - 10 Pack	2125QTI-K425-10
12	Information Label	W7152-300 (47542207001)		Grease	---
13	Seal, Ring Gear	W7152-65 (47596612001)	*	Grease, IR # 105 (4 oz. tube)	105-4T
*	Gear Kit	W7152-K37 (47631606001)		Grease, IR # 105 (1 lb can)	105-1LB
14	Cam Thrust Washer	---		Grease, IR # 105 (8 lb can)	105-8LB
15	Planet Gear (3 required)	---	*	Grease Gun	R000A2-228
16	Gear Pin (3 required)	---			
17	Impact Mechanism Kit	TA-W7153-IMK			
	Camshaft	---			
	Hammer	---			
	Spring	---			
	Ball, Hammer (36 required)	---			
	Ball, Camshaft (2 required)	---			
	Thrust Washer	---			
*	Anvil Assembly (internal)	TA-W7153-5265D			
18	Anvil, Internal	---			
19	Grease Fitting	131-188			
20	Hammer Case Assembly	TA-W7153-727			
21	Bushing, Hammer Case	TP-W7153-6415D			
	Hammer Case	---			
	Hammer Case Sleeve	---			
	COB Light Assembly	---			
	Lens Assembly	---			
22	Retaining Pin Guard	TP-W7153-961			

* Indicates not illustrated.

Parts and Maintenance

When tool life has expired, it is recommended that the tool be disassembled, degreased and parts separated by material for proper recycling. Tool repair and maintenance should only be carried out by an Authorized Service Center. Refer all communications to the nearest **Ingersoll Rand** office or distributor.

Related Documentation

Manuals can be downloaded from [ingersollrand.com](https://www.ingersollrand.com)
For additional information, refer to:
Product Safety Information Manual 04581146
Product Information Manual TL-W7253-TL-PLM
CE-Declaration of Conformity TL-W7153-DOC
UK-Declaration of Conformity TL-W7153-DOC-UK

