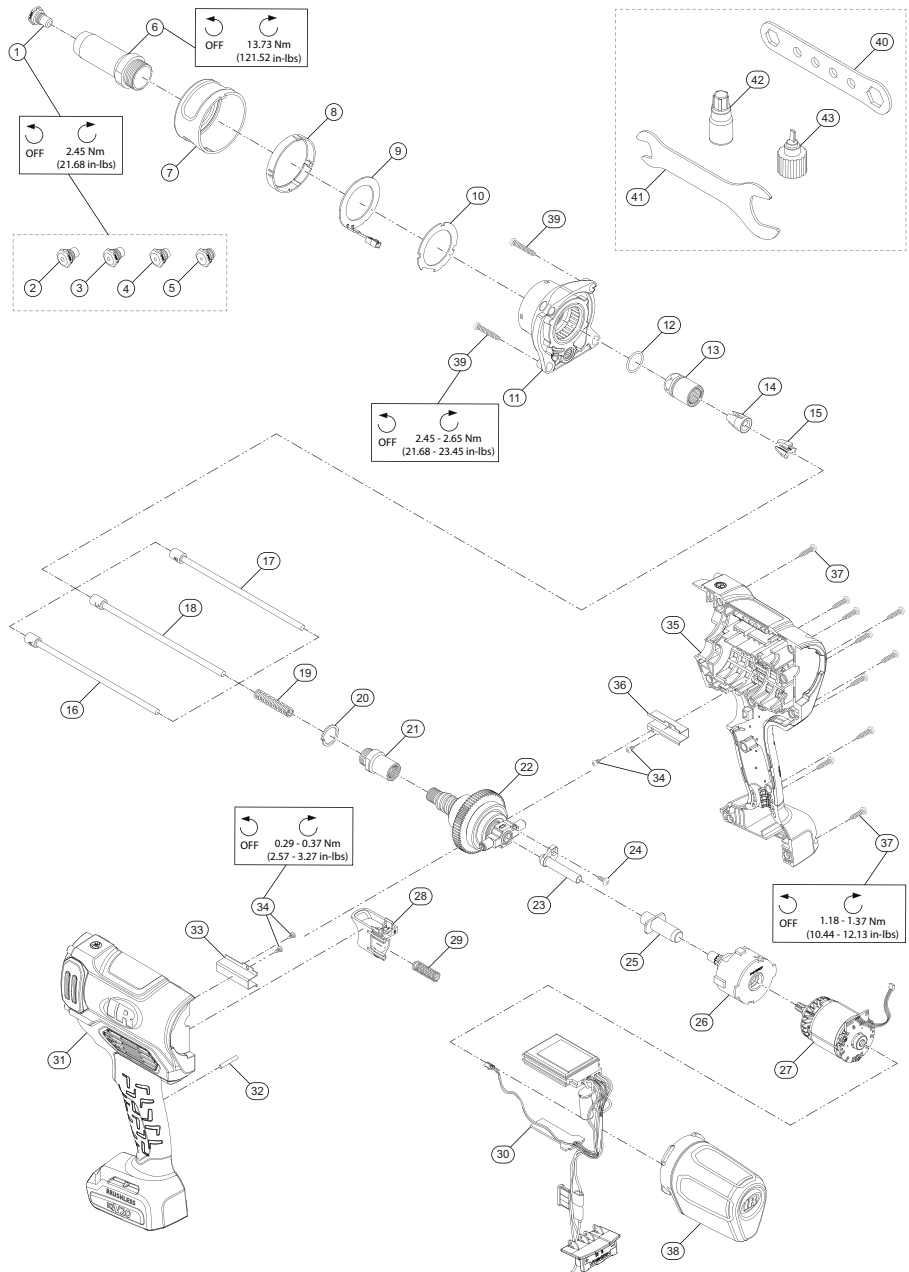


V3121, Cordless Rivet Tool - Exploded View



(Dwg. TL-V3121-PLM-1)



TL-V3121-PLM
Edition 2
June 2025

V3121, Cordless Rivet Tool - Parts List

Item	Part Description	Part Number (CCN)	Item	Part Description	Part Number (CCN)
*	Retaining Nose Piece Kit	TK-V3121-082	26	Gear Box Assembly Kit	TK-V3121-750
1	Nose Piece (1/4")	---	27	Motor Kit	TK-V3121-054
2	Nose Piece (3/16")	---	*	Switch Assembly Kit	TK-V3121-093
3	Nose Piece (5/32")	---	28	Trigger Assembly	---
4	Nose Piece (1/8")	---	29	Trigger Spring	---
5	Nose Piece (3/32")	---	30	PCB Assembly Kit	TK-V3121-499
6	Nose Housing Kit	TK-V3121-019	*	Housing Kit	TK-V3121-040
*	Ring LED Kit	TK-V3121-ALED	31	Left Housing	---
7	LED Cover	---	32	Pin	---
8	Front Housing Ring	---	33	Left Guide	---
9	LED PCB	---	34	Guide Screw (4 required)	---
10	Gasket	---	35	Right Housing	---
11	Front Housing Assembly	TK-V3121-727A	36	Right Guide	---
*	Jaw Housing Kit	TK-V3121-300	37	Housing Screw (10 required)	---
12	O-Ring	---	38	Rivet Pin Collector	TK-V3121-302
13	Jaw Housing	---	*	Fastener Kit	TK-V3121-105
14	Jaw Holder	---	37	Housing Screw (10 required)	---
15	Jaws (3 piece set)	---	39	Front Housing Screw (4 required)	---
*	Jaw Pusher Kit	---	*	Service Kit	TK-V3121-S1
16	Jaw Pusher (A) for Rivet 2.4 mm (3/32 in.) and 3.2 mm (1/8 in.)	TK-V3121-201A	40	Nose Piece Wrench	---
17	Jaw Pusher (B) for Rivet 4.0 mm (5/32 in.) and 4.8 mm (3/16 in.)	TK-V3121-201B	41	Rivet Set Wrench	---
18	Jaw Pusher (C) for Rivet 6.4 mm (1/4 in.)	TK-V3121-201C	42	Oil	---
*	Ball Screw Spindle Assembly Kit	TK-V3121-807	43	Jaws Assembly Jig	---
19	Spring	---	*	Tool Protective Boot	V3121-BOOT
20	Spring Washer	---		20V Li-ion Battery Pack	---
21	Spindle Adapter	---	*	2.5Ah	BL2012 (47515903001)
22	Ball Screw Spindle Assembly	---		5.0Ah	BL2022 (47515902001)
23	Extension Pipe	---	*	Battery Charger	BC1121 (47507879001)
24	Pipe Screw	---		Protective Battery Boot	---
25	End Pipe	---	*	For 2.5Ah Battery	BL2005-BOOT (47510965001)
				For 5.0Ah Battery	BL2010-BOOT (47510964001)
			*	Storage/Carrying Bag	TB4 (47543666001)

* Indicates not illustrated.

Parts and Maintenance

When tool life has expired, it is recommended that the tool be disassembled, degreased and parts separated by material for proper recycling.

Tool repair and maintenance should only be carried out by an Authorized Service Center.

Refer all communications to the nearest **Ingersoll Rand** office or distributor.

Related Documentation

Manuals can be downloaded from [ingersollrand.com](https://www.ingersollrand.com)

For additional information, refer to:

Product Safety Information Manual TL-V3121-SIM

Product Information Manual TL-V3121-PIM

CE-Declaration of Conformity TL-V3121-DOC

UK-Declaration of Conformity TL-V3121-DOC-UK