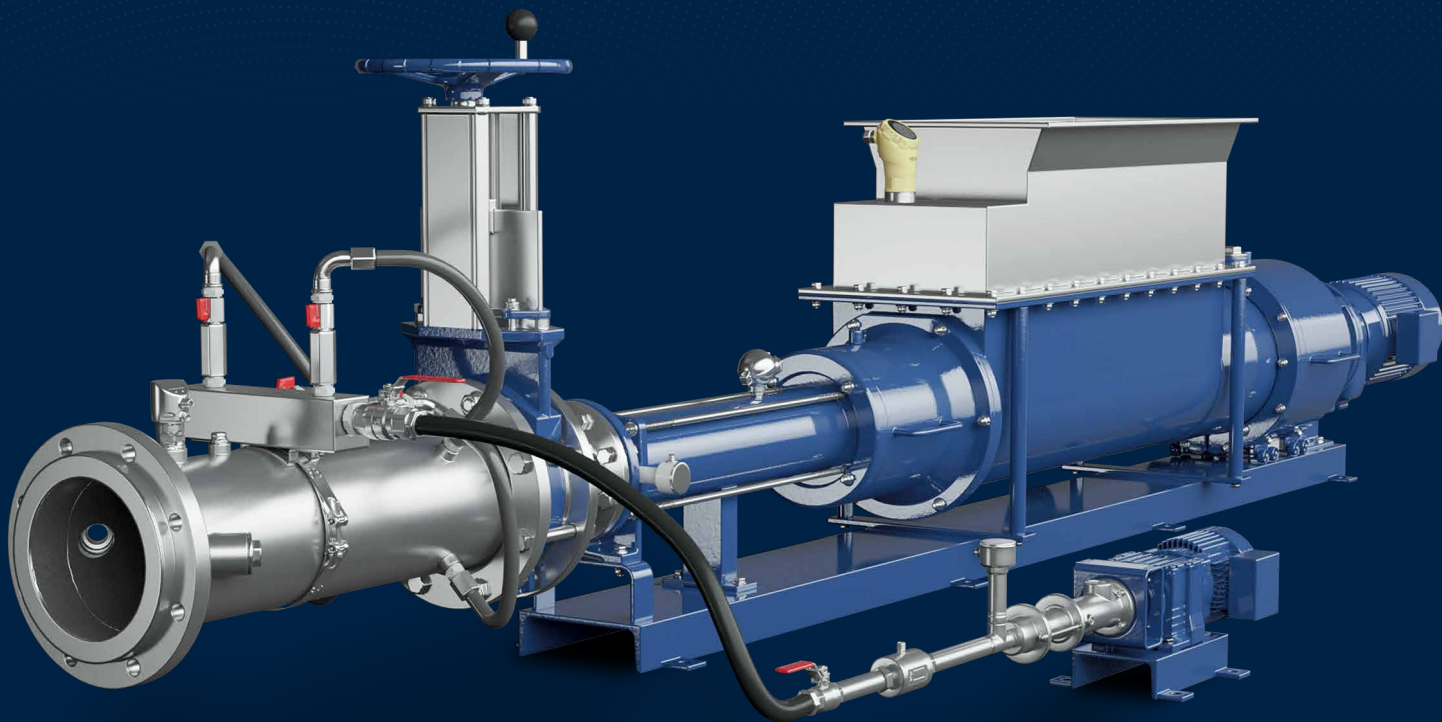


SEEPEX.

An Ingersoll Rand Business

EFFICIENT FOOD WASTE HANDLING. SMART AIR INJECTION



SAI

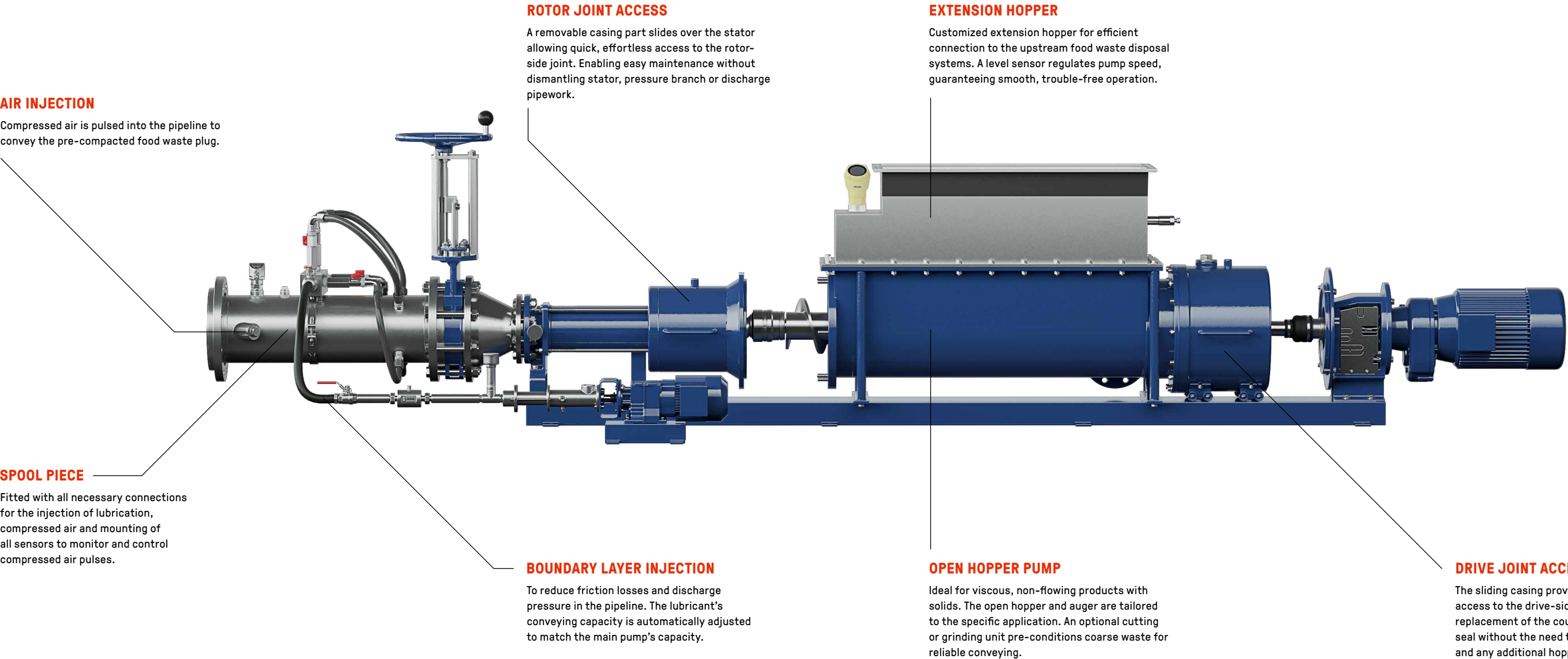
STREAMLINED, SAFE HANDLING.

Food and beverage facilities generate waste that must be quickly and efficiently removed to maintain cleanliness and maximize production capacity. Traditional conveyors are costly, energy-intensive and problematic, especially over long distances, whilst manual handling increases the risk of contamination and safety hazards.

Smart Air Injection (SAI) from SEEPEX is a cutting-edge solution that transforms food waste transport. SAI's advanced pumping technology boosts operational efficiency, cuts costs and ensures a safer, cleaner working environment. When food waste contains coarse or oversized particles that cannot form a condensed plug, optional cutting knives or grinder can be used to pre-condition the material.

Streamlined and flexible installation due to an enclosed pipe design, SAI minimizes odors, eliminates spillages and reduces the need for bulky support structures. It's the smart, economical choice for waste management.

Upgrade to SAI for lower maintenance costs, significant energy savings, and a safer conveying solution.



WHY SAI FOR FOOD WASTE TRANSPORT?



UNMATCHED ENERGY EFFICIENCY

Boost process efficiency and reduce operational costs. Compressed air pulses deliver unprecedented energy savings, while low-pressure piping cuts setup expenses and extends service life.



SAFETY HAZARDS ELIMINATED

Enclosed piping improves efficiency and safety on the factory floor by reducing traffic and hazards in high-risk areas and eliminating the need for fume extraction and emission control.



PRODUCTIVITY BOOSTER

Cut operating costs with revolutionary technology that streamlines food waste transport, eliminating the need for manual or mechanical handling.



COMPREHENSIVE MONITORING

Achieve total control with SEEPEX Pump Monitoring for predictive maintenance and performance optimization.



MAINTAIN IN PLACE

The patented Drive Joint Access and Rotor Joint Access make open hopper pump maintenance quick and easy, eliminating the need to remove pipework or pump skids. This reduces maintenance costs, enables quick inspections of joints/seals and increases uptime for smooth, trouble-free operation.

SEEPEX.

An Ingersoll Rand Business

APPLICATIONS

SAI is ideal for the food and beverage industry, including processing plants, manufacturers and large food service operations. It handles a wide variety of food waste types, residues and by-products with reliability and efficiency.

The SAI system efficiently transports semi-solid and highly viscous waste materials, including coffee and tea grounds, mustard hulls, soybean residues, microcellulose, legumes, oatmeal, pectin residues and much more. Optional lubricant injection further enhances efficiency. When food waste is too coarse to form a plug, SEEPEX offers optional conditioning solutions to grind, crush or shred the material before pumping. This can be done with static and rotating knives within the pump itself or a grinder mounted on or above the pump's open hopper. It is ideal for waste which contains hard particles such as mango, peach or avocado stones and pineapple tops. The system also allows the particle size to be adjusted to suit animal feed or biogas production.

SAI also reduces the need for water flume systems, making it a cleaner, more energy-efficient solution for fish and seafood processing. No added water, no waste dilution and no strain on water treatment. Do you have waste handling problems? Let us help you find the most efficient solution. Contact us today.

BENEFITS

- Unmatched energy efficiency, lower operating costs and faster maintenance compared to mechanical conveyors
- Closed pipe system prevents odors and spillages, enhancing safety and reducing manual cleaning
- Handles long distances, elevation changes and directional shifts effortlessly
- Optional grinding or shredding for coarse food waste
- Reduced particle size to meet your process requirements
- Eliminates bulky structures to cut construction time and costs

KEY FACTS

- Conveying capacity:
0.5–30 m³/h (2.2–132 USGPM)
- Transfer distance:
several hundred meters
- Wetness-content of food waste:
60–85%

SEEPEX GmbH

www.seeplex.com