



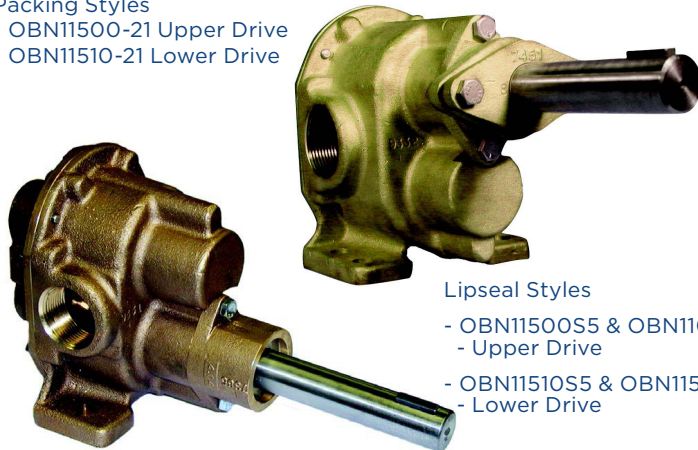
OBERDORFER®

An Ingersoll Rand Business

N11500 | N11510 Series Bronze Pedestal Rotary Gear Pumps

Packing Styles

- OBN11500-21 Upper Drive
- OBN11510-21 Lower Drive



Lipseal Styles

- OBN11500S5 & OBN1100S3 - Upper Drive
- OBN11510S5 & OBN11510S3 - Lower Drive

Features

- 1-1/4" NPT Ports
- Temp. Range: -40 - 400°F
- Bronze Corrosion Resistant Castings
- Stainless Steel Shafts & Fasteners
- Self-Lubricating Carbon Bearings
- Formed ring seal packing, lip seals or mechanical seals are available
- Acrylic Graphite Packing or FKM-PTFE or NBR Lip
- For Mechanical Seals, see Models OBN11HDM
- For Heavy Pulley loads, see Model OBN11HDP

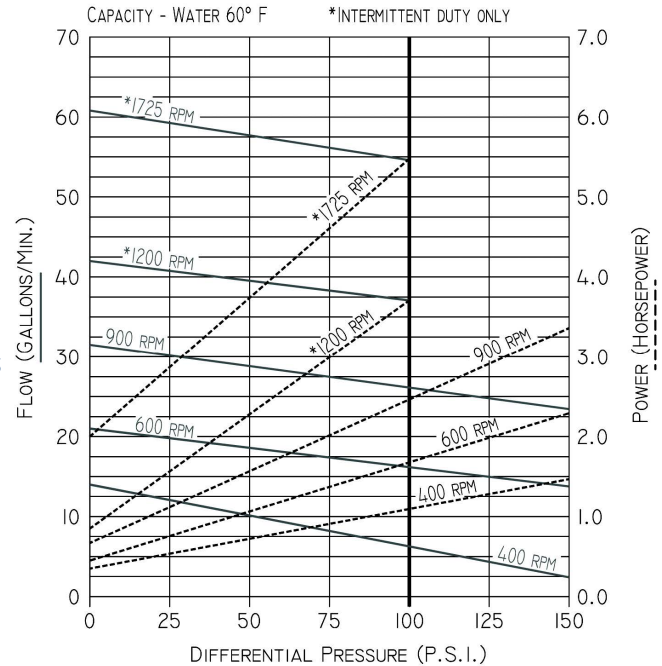
Liquids and Temperature

Service life will be increased substantially if the liquid pumped is clean and has a lubricity value.

These pumps have extremely close tolerances. Fine abrasives like sand, silt, or powders in suspension will destroy pumping ability.

Liquids compatible with bronze, stainless steel and the acrylic graphite packing can be pumped. Solvent resistant packings and PTFE packings are also available. See a chemical compatibility table or check factory. When possible, flush the pump with water after using.

Performance

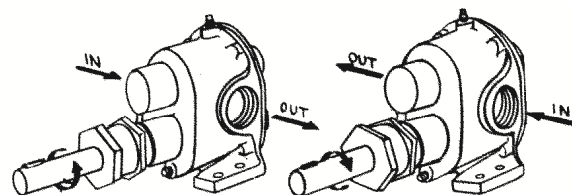


Temperature extremes are detrimental to service life and should be avoided. Basic metals of construction allow temperature range of -40° to 400° F. the acrylic graphite packing is rated to 500° F. Freezing liquid in the pump can deform or damage the pump.

Viscous liquids such as molasses or oils require a lower pumping speed, in extreme cases as low as 200 RPM. Consult factory for recommended speeds and increased horsepower requirements. Large suction lines are required to prevent cavitation which can cause pump destruction. Liquids with specific gravities heavier than water such as dry cleaning fluids require an increase in motor horsepower directly proportional to the increase in specific gravity over water.

Rotation

OBN11510-21 shown





OBERDORFER[®]

An Ingersoll Rand Business

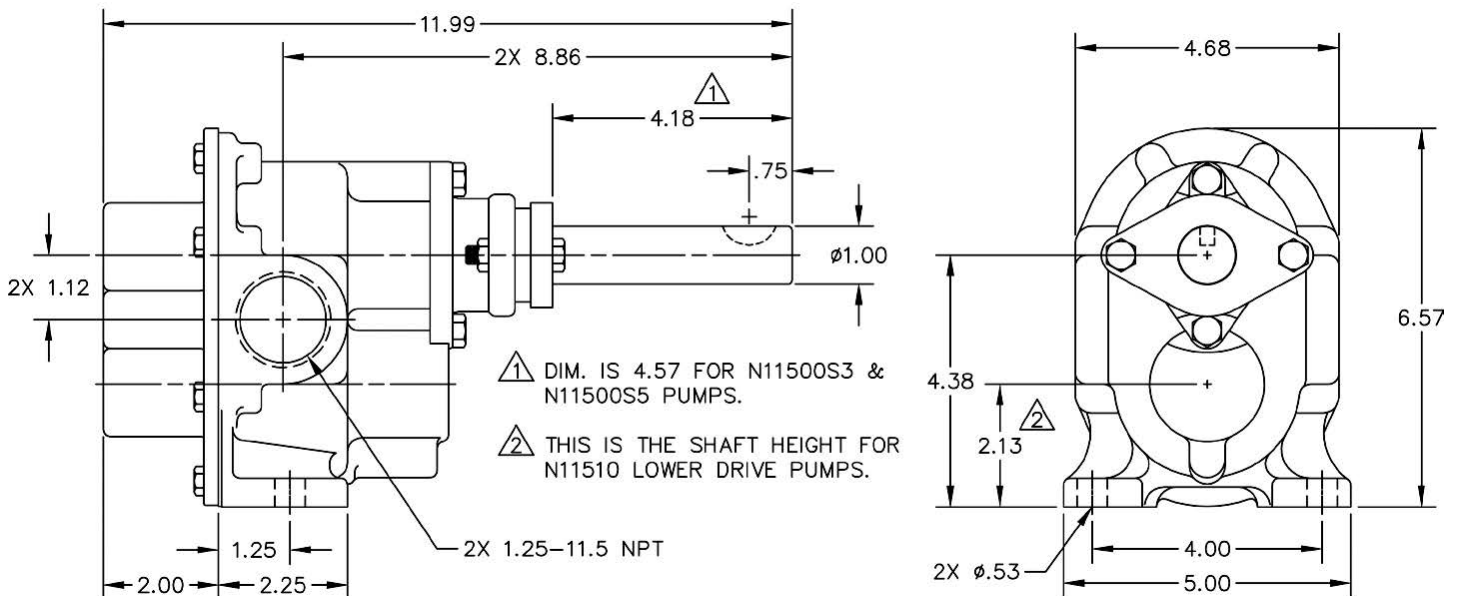
Suction Lift

A rotary gear pump is capable of lifting water on the suction side as high as 20 feet. Though gear pumps are self-priming, a foot valve is recommended. For pump-ing water directly from streams or ponds, a wire mesh strainer must be used at the beginning of the suction line to prevent stones from entering the pump. Strainer and foot valve are commercially available as combination units.

Drive

Either direct drive with flexible coupling or pulley drive can be used. For pulley driven pumps a pillow block bearing must be used at the drive shaft end to absorb the belt forces. The drive shaft is sufficiently long enough to accommodate a pillow block in addition to the pulley.

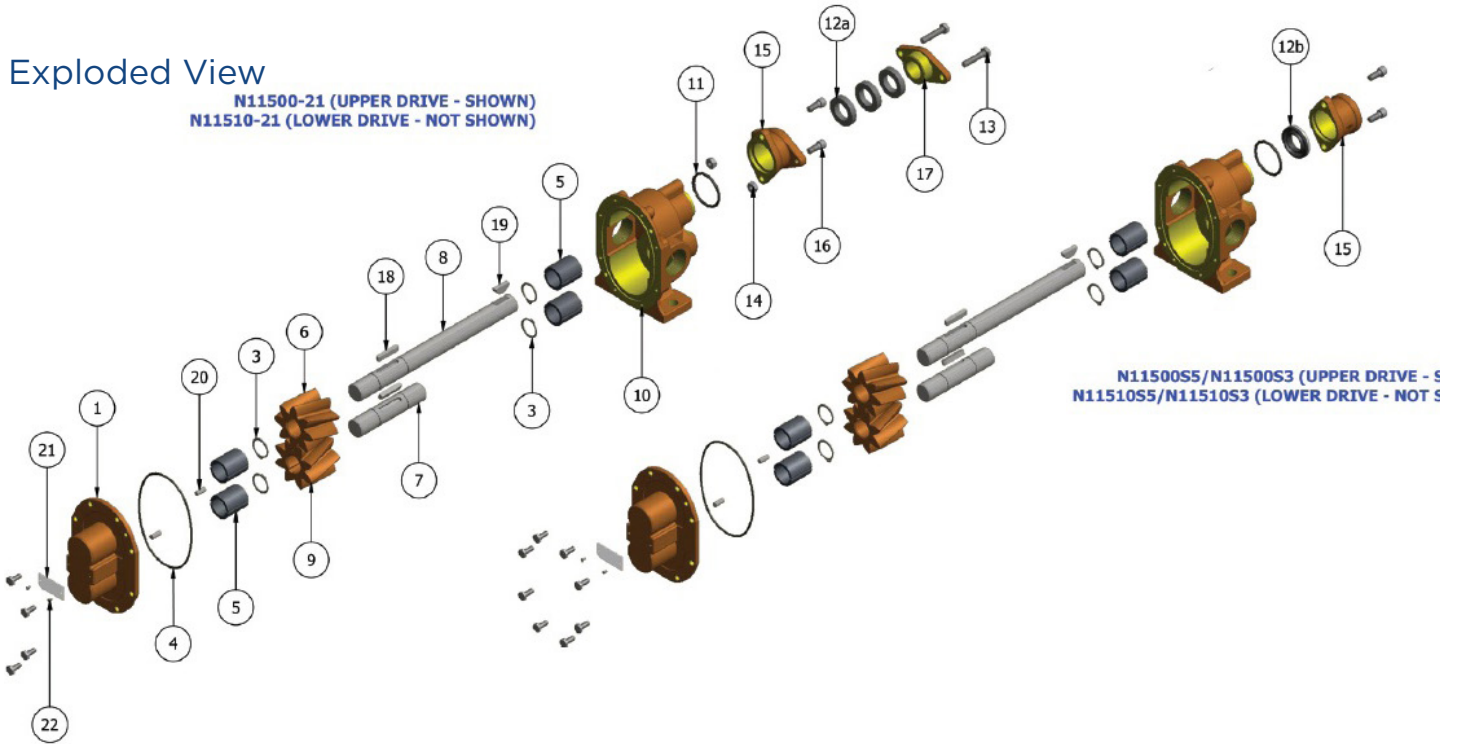
Dimensions



12500 South Pulaski Road
Alsip, IL 60803, USA
Phone (800) 448.1668

Exploded View

N11500-21 (UPPER DRIVE - SHOWN)
N11510-21 (LOWER DRIVE - NOT SHOWN)



N11500S5/N11500S3 (UPPER DRIVE - SHOWN)
N11510S5/N11510S3 (LOWER DRIVE - NOT SHOWN)

	1	2	3	4	5	6	7	8	9	10	11	12a
	Cover	Screw	Snap Ring	O-Ring	Bearing	Drive Gear	Idle Shaft	Drive Shaft	Idle Gear	Body	O-Ring	Packing
Model	Qty. 1	Qty. 8	Qty. 4	Qty. 1	Qty. 4	Qty. 1	Qty. 1	Qty. 1	Qty. 1	Qty. 1	Qty. 1	Qty. 3
OBN11500-21	OB9333NN5N	OB5393	OB7651	OB9797-158	OB5108	OB9833	OB7652	OB5685	OB9834	OB9331NG7N	OB6515	OB7624
OBN11510-21										OB9331NG8N		
OBN11500S5										OB9331NG7N	OB9797-224	NA
OBN11510S5										OB9331NG8N		
OBN11500S3										OB9331NG7N		
OBN11510S3										OB9331NG8N		

	12b	13	14	15	16	17	18	19	20	21	22	Repair Kit
	Lip Seal	Screw	Nut	Gland	Screw	Seal Adapter	Key	Key	Dowel Pin	Tag	Tag Screw	
Model	Qty. 1	Qty. 2	Qty. 2	Qty. 1	Qty. 2	Qty. 1	Qty. 2	Qty. 1	Qty. 2	Qty. 1	Qty. 2	
OBN11500-21	N/A	OB9905	OB8395	OB7451	OB6827	OB9904	OB6518	OB5576	OB8597	OB9344	OB9345	OB10642
OBN11510-21												OB11048
OBN11500S5	OB7262	N/A	N/A	OB9853	N/A	N/A	N/A	N/A	N/A	N/A	N/A	OB11058
OBN11510S5												OB11058
OBN11500S3	OB6500	N/A	N/A	OB9853	N/A	N/A	N/A	N/A	N/A	N/A	N/A	OB11058
OBN11510S3												OB11058

Repair Kit contains items 3, 4, 5, 6, 7, 8, 9, 12 & 18.
 For shaft and gear subassemblies only refer to kit 12015.